

## Concrete spraying system

# Concrete Spraying System Sika®-PM500

## Description

Thanks to its large working range, the Sika-PM500 concrete spraying system is very suitable for medium and large tunnels, caverns and high slopes.

The carrier has an optimal ground clearance and therefore used for steep slopes.

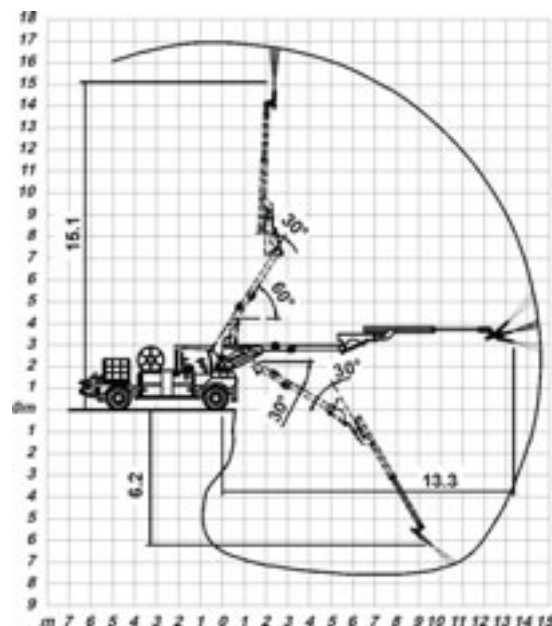
The modular concept allows the following variants:

- Telescope spraying arm SA 13.9
- Concrete spraying machine BSA 1005 (dense stream), Aliva-285 (thin stream)
- Liquid dosing unit Aliva-403.5
- Compressor (by choice)
- Accelerator tank
- Water tank for Cleaning
- Cable reel 50-120 m Cable available (Standard 50 m)
- Lifting device for Aliva-285

The operation of the spraying system is carried out via an electric or via an optional wireless remote control.

## Working range

### Telescope spraying arm 13.9



### Caution

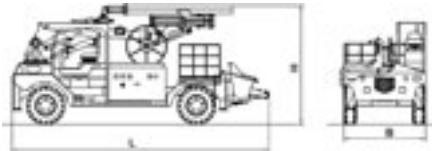
Technical and design modifications remain reserved at all times. Technical properties have been achieved under theoretical and normal conditions. Please consult the respective machine manual for all matters related to operations and maintenance.

**Telescope spraying arm****SA 13.9**

Tunnel-dimensions	4,5–17,5 m
Motor output	15 kW
Remote control	15 m cable
Working light	2 x 1000 W
Horizontal automatic	Keeps the lafette automati- cally in the hori- zontal position

**Accessories SA 13.9 (Option)**

Remote control	wireless
----------------	----------

**Technical data****Dimensions Sika-PM500**

Transport length <b>L</b>	approx. 8,0 m
Transport width <b>B</b>	approx. 2,4 m
Transport height <b>H</b>	approx. 3,4 m
Weight	
SA 13.9/Aliva-285	approx. 13600 kg
SA 13.9/Aliva-285/ Compressor	approx. 13600 kg
SA 13.9/BSA 1005	approx. 14600 kg
SA 13.9/BSA 1005/ Compressor	approx. 14600 kg
Rotating radius	3,0 / 6,5 m
Ground clearance	0,5 m

**Cable reel**

Voltage	400 V 50 Hz 440 V 60 Hz
Cable length	100 m
Rolling on	hydraulic
Rolling off	hydraulic

**Liquid dosing unit Aliva-403.5**

Motor output	1,1 kW
Conveying output	30 - 700 l/h

**High pressure cleaner**

Drive	hydraulic
Motor output	10 kW
Conveying output	25 l/min.
Conveying pressure	max. 220 bar

**Optionals for Sika-PM500****Accelerator tank**

Volume	1000 L/pcs.
Number	1-2 piece (1000 l) 1-2 piece (600 l)

**Water tank for cleaning**

Volume	300 l
--------	-------

**Compressors**

for BSA 1005	75 kW/410 cfm 11,5 m <sup>3</sup> /min.
for Aliva-285	110 kW/600 cfm 20,0 m <sup>3</sup> /min.

**Drive****Carrier (Diesel engine)**

Motor output	59 kW
Cooling	Water
Drive	hydrostatic 4x4

Steering	4-wheel steering
Speed	20 km/h

**Caution**

Technical and design modifications remain reserved at all times. Technical properties have been achieved under theoretical and normal conditions. Please consult the respective machine manual for all matters related to operations and maintenance.

**Concrete spraying machine**

	<b>Aliva-285</b>	<b>BSA 1005</b>
Function	rötor	Pumpe
Conveying output	8-21 m <sup>3</sup> /h	-30 m <sup>3</sup> /h
Air pressure max.	7 bar	7 bar
Concrete pressure max.	-	75 bar
Motor output	11 kW	37 kW

**Sika-PM500 P**

**Sika Schweiz AG**  
Tunneling & Mining  
Bellikonstrasse 218  
CH-8967 Widen / Switzerland

Telefon +41 56 649 31 11  
Fax +41 56 649 32 04

e-mail [info@sika-stm.com](mailto:info@sika-stm.com)  
[www.sika-stm.com](http://www.sika-stm.com)